

SOFTWARE MANUAL

Report Writer



fiberTOOLS™

TEMPO - 525N Report Writer

*fiber*TOOLS™

SOFTWARE MANUAL

CUSTOMER TRAINING & TECHNICAL SUPPORT

NOTICE: This document is an unpublished work protected by United States copyright laws and is proprietary to Tempo. Disclosure, copying, reproduction, merger, translation, modification, enhancement or use by anyone other than authorized employees or licensees of Tempo and its affiliate companies without prior consent of Tempo is prohibited.

REPRODUCTION AND DISTRIBUTION OF THIS TECHNICAL MANUAL IS AUTHORIZED FOR GOVERNMENT PURPOSES.

Copyright © 2003

Tempo - a Textron Company. All rights reserved.

Tempo Research, a Delaware Corporation



Statement of Warranty

Tempo warrants this product to be free from defects in materials and workmanship for a period of one (1) year from the date of shipment. During the warranty period we will, at our option, either repair or replace any product that proves to be defective. To exercise this warranty, write or call your local Tempo representative, or contact Tempo directly. You will be given prompt assistance and return instructions. Send the instrument, transportation prepaid, to the indicated service facility. Repairs will be made and the instrument will be returned transportation prepaid. Repaired products are warranted for the balance of the original warranty period, or at least ninety (90) days.

Year 2000 Compliance:

Tempo warrants that the 525 and its ReportWriter Software are designed to be used after the calendar year 2000 A.D., and that the Software will operate without error relating to date data, specifically including any error relating to, or the product of, date data which represents or references different centuries or more than one century.

Limitations of Warranty

This warranty does not apply to defects resulting from unauthorized modification or misuse of any product or part. This warranty also does not apply to AC adapters, batteries, or damage from battery leakage.

This warranty is in lieu of all other warranties, expressed or implied, including any implied warranty of merchantability or fitness for a particular use. Tempo shall not be liable for any indirect, special, or consequential damages.



TABLE OF CONTENTS

Section 1 - GENERAL INFORMATION ***PAGE:***

General Information.....	1
Service & Product Information.....	1
Loading Report Writer Software.....	2
Launching Report Writer.....	2

Section 2 - SOFTWARE OPERATION ***PAGE:***

Main Cable Manager Screen.....	3
List Bar.....	4
Data Manager Icons.....	4
Database Utilities Icons.....	5
Data Grid.....	6
Selecting Detail Data Columns.....	6-9
Test Details.....	10
Job Manager.....	11
Creating a New Job.....	11
Uploading and Saving 525N Data to Report Writer.....	12
Deleting Data from the 525N Unit.....	13
Setting the 525N Unit Clock from Report Writer.....	13
Assigning Database Data in Report Writer.....	14
Deleting a Single Record from the Report Writer Database.....	15
Deleting a Cable from the Report Writer Database.....	15
Sorting Saved Data.....	16-17
Printing a Report.....	18
Export a Report.....	18
Customizing a Printed Report with a Unique Graphic.....	19



Knowledge. Solutions. Success.

GENERAL INFORMATION

TEMPO 525 Report Writer is a database management and productivity enhancement tool that can be used to generate professional reports detailing the tests performed by both the 525N-30 and the 525N-60 Optical Loss Test Sets. The 525 Report Writer displays and prints cable information, detailing all fibers tested in that cable, or can provide results on a single fiber.

Additional user information such as Job ID, customer name, material info, and other user definable notes and data pertaining to specific jobs, may be input directly into Report Writer via a PC.

The screen and printed report contain five sections of information:

- Customer Details
- Measurement Information
- Project Information
- Material Information
- Cable / Fiber Comments

Users can customize the reports for their own company by placing a graphic in the upper left corner of the printed page.

Data stored in the 525N Optical Loss Test Set is uploaded to a Windows compatible PC via the RS232 Data Transfer Cable provide with the 525N Test Set. The Data Transfer Cable connects the users PC via serial port connection.

SERVICE AND PRODUCT INFORMATION

For warranty or non-warranty service, please Telephone, Fax or E-Mail Tempo at -

TEL: 1 800 642-2155 or 1 760 598-8900

FAX: 1 760 598-5634

E-MAIL: REPAIR@TEMPO.TEXTRON.COM

For product and ordering information, please Telephone, Fax or E-Mail Tempo at -

TEL: 1 800 642-2155 or 1 760 598-8900

FAX: 1 760 598-5634

E-Mail: SALES@TEMPO.TEXTRON.COM

WEB: WWW.TEMPO.TEXTRON.COM

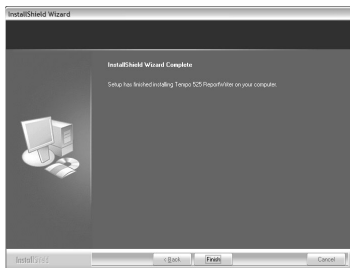
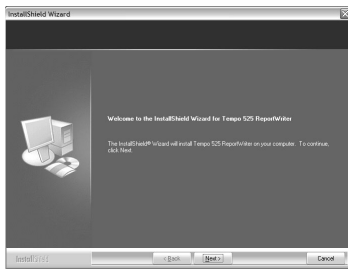
SOFTWARE MANUAL - 525N Report Writer

LOADING REPORT WRITER SOFTWARE

To install the Report Writer Software on a Windows compatible PC:

1. Insert the Report Writer disk into the CD ROM Drive on your computer.
2. The Windows Installer will prompt you through installation of the software.

Note: If the Installer does not appear, choose 'Run' from the windows Start Menu, type '525ReportWriter.exe' and identify the name of the drive where the CDROM is located.



3. The Installer will indicate when the installation is complete. Click the 'Finish' button to close the Windows Installer and return to the desktop.
4. If Installation is successful, the Tempo Report Writer icon will appear on the desktop and in the Start>Programs menu.



The Report Writer program and associated files can be found in the Tempo folder located within the windows Programs Files folder, within the.

To uninstall the 525N Report Writer software and remove it's components, use 'Add or Remove Programs' found in Start > Control Panel > Add or Remove Programs.

LAUNCHING REPORT WRITER

To start Report Writer, choose one of two options -

- Double click the desktop Tempo 525N Report Writer Icon.
- or
- Single click the Tempo 525N Report Writer Icon in the Start > Programs menu.

Once the program has started, the Main Data Manager Work Screen will appear.

MAIN CABLE MANAGER SCREEN

The main Data Manager work screen is divided into four sections: LIST BAR, DATA GRID, TEST DETAILS and STATUS BAR.

Tempo 525 Report Writer - Cable Manager

Data Manager

Cable Manager

Upload Data

Delete D6 Data

Delete 525 Data

Print Detail Report

Job Manager

About Report Writer

Cable Details

Cable ID 1

FiberNumber

FileName

ILAverageWaveA

ILAverageWaveB

IL Pass

ILWaveA_LocalToRemote

ILWaveA_RemoteToLocal

ILWaveB_LocalToRemote

ILWaveB_RemoteToLocal

1

Fiber1

-0.3

-0.27

☒

-0.52

-0.08

-0.06

2

Fiber2

0.01

0

☒

0.02

-0.01

0.01

3

Fiber3

-3.42

-3.49

☒

-3.43

-3.42

-3.52

4

Fiber4

-5.18

-5.26

☒

-4.9

-5.45

-5.56

5

Fiber5

-6.9

-7.02

☒

-6.33

-7.47

-7.58

6

Fiber6

-8.66

-8.78

☒

-7.81

-9.5

-9.6

7

Fiber7

-11.25

-11.4

☒

-10.02

-12.48

-12.65

8

Fiber8

-12.12

-12.28

☒

-10.75

-13.5

-13.67

9

Fiber9

-15.59

-15.79

☒

-13.67

-17.51

-17.67

10

Fiber10

-31.82

-32.17

☒

-27.48

-36.16

-36.6

11

Fiber11

-28.5

-28.78

☒

-24.77

-32.24

-32.75

Measurement Information

Wavelength (nm)

Insertion Loss A to B (dB)

Insertion Loss B to A (dB)

Insertion Loss Average (dB)

Return Loss(dB) Worst Case

Wavelength A

Wavelength B

Project Information

Job: 1234

Location A: Vault 102

Location B: Terminal 14

Customer: T. Research Corp.

Operator A: J. Smith

Operator B: S. Jones

Date: 11/10/2003 12:00:00 AM

Sample Field 1: Sample Data 1

Sample Field 2: Sample Data 2

Material Information

Manufacturer: Fiber Fun Inc.

Length (m): 1248

Cable Type: SMA 906

Cable Comments

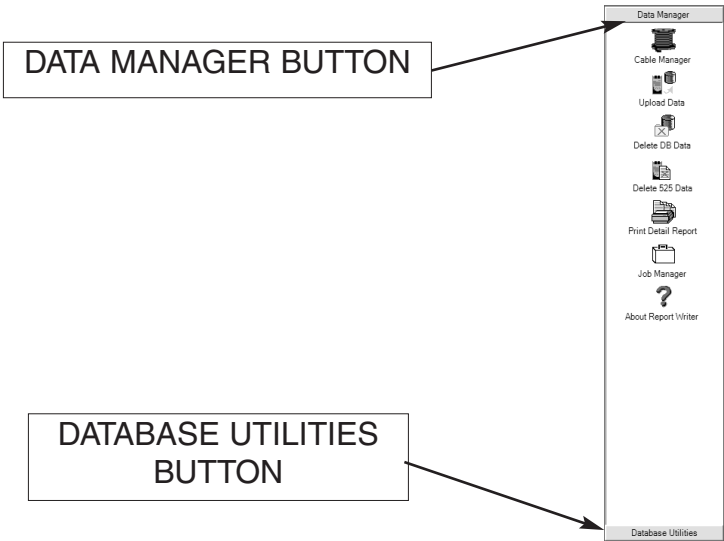
Example - Data Upload Single Mode (Unit 1)

Database Utilities

Tempo 525 device connected at COM1

LIST BAR

The List Bar has two modes: Data Manager and Database Utilities. You can access either mode by pressing the Data Manager or Utilities buttons on the List Bar.

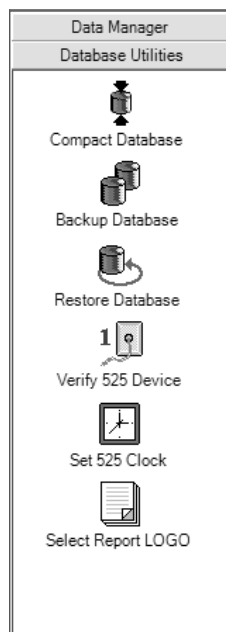


In Data Manager mode the List Bar will display icons for:

- | | |
|-----------------------|--|
| CABLE MANAGER - | Returns the display to the Main Data Manager screen. |
| UPLOAD DATA - | Uploads and stores data from the 525 Unit in the Report Writer Database. |
| DELETE DB DATA - | Deletes selected cable data from the Report Writer database. |
| DELETE 525 DATA - | Deletes all test detail data from the 525 Unit when the unit is connected to the PC. |
| PRINT DETAIL REPORT - | Displays and enables printing of cable and test data from a selected Cable or Fiber. |
| JOB MANAGER - | Displays the Job Manager screen to create, edit and delete individual jobs. |
| ABOUT REPORT WRITER - | Displays the version of Report Writer software currently loaded on the PC. |

LIST BAR *Continued.* . .

In Database Utilities mode the List Bar will display icons for:



COMPACT DATABASE -	Compacts the database file located in the 525N Report Writer's Data folder, to reduce disc space on the PC.
BACKUP DATABASE -	Creates a backup database file (.bak) located in the 525N Report Writer Data folder.
RESTORE DATABASE -	Recovers data from the 525N Report Writer backup database file.
VERIFY 525 DEVICE -	Identifies the Com Port location and Port Status of the 525 Unit when connected to the PC.
SET 525 CLOCK -	Resets the 525 Unit's clock to the current PC time setting.
SELECT REPORT LOGO -	Enables the selection of a custom logo or image to display on the printed Detail Report.

DATA GRID

The Data Grid displays Cable Detail data that is saved in the Report Writer database. This data is a combination of information that has been uploaded from the 525N Test Set and input from the Job Manager Screen from Report Writer.

Cable Details							
Cable ID: Cable000 (25 items)							
FiberNumber	FileName	ILAverageWaveA	ILAverageWaveB	IL Pass	ILWaveA_LocalToRemote	ILWaveA_RemoteToLocal	ILWaveB_LocalToRemote
1	Fiber1	-0.3	-0.27	<input checked="" type="checkbox"/>	-0.52	-0.08	-0.06
2	Fiber2	0.01	0	<input checked="" type="checkbox"/>	0.02	-0.01	0.01
3	Fiber3	-3.42	-3.49	<input checked="" type="checkbox"/>	-3.43	-3.42	-3.52
4	Fiber4	-5.18	-5.26	<input checked="" type="checkbox"/>	-4.9	-5.45	-5.56
5	Fiber5	-6.9	-7.02	<input checked="" type="checkbox"/>	-6.33	-7.47	-7.58
6	Fiber6	-8.66	-8.78	<input checked="" type="checkbox"/>	-7.81	-9.5	-9.6
7	Fiber7	-11.25	-11.4	<input checked="" type="checkbox"/>	-10.02	-12.48	-12.65
8	Fiber8	-12.12	-12.29	<input checked="" type="checkbox"/>	-10.75	-13.5	-13.67
9	Fiber9	-15.59	-15.79	<input checked="" type="checkbox"/>	-13.67	-17.51	-17.67
10	Fiber10	-31.82	-32.17	<input checked="" type="checkbox"/>	-27.48	-36.16	-36.6
11	Fiber11	-28.5	-28.78	<input checked="" type="checkbox"/>	-24.77	-32.24	-32.75

SELECTING DETAIL DATA COLUMNS

There are 10 default data columns plus an additional 30 columns available for display and print. Any or all of the 40 columns can be selected for display at the users preference.

Select the column to Show/Hide . . .

☐ FiberNumber

☒ FileName

☒ ILAverageWaveA

☒ ILAverageWaveB

☒ IL Pass

☐ ILWaveA_LocalToRemote

☐ ILWaveA_RemoteToLocal

☐ ILWaveB_LocalToRemote

☐ ILWaveB_RemoteToLocal

☐ LimitILWaveA

☐ LimitILWaveB

☐ LimitRLWaveA

☐ LimitRLWaveB

☐ ReflILWaveA_LocalToRemote

☐ ReflILWaveA_RemoteToLocal

☐ Select All

☒ Default Select

Cancel

Apply

OK

To select the desired data for display, place the cursor in the Data Grid, right click the mouse and select Show/Hide Columns. The window will display the data columns that are available.

Select one of the radio buttons to display and print either the 10 default fields or all 40 of the data fields.

Optionally, any individual data column can be selected by left clicking on the individual name.

Once the desired columns have been selected, click the Apply button and then click OK.

The selected columns will be displayed in the Data Grid.

DATA GRID *Continued.* . .

The following 4 Data Columns are available:

FIBER NUMBER -	Number of the fiber as assigned in the 525N unit when test was performed.
FILE NAME -	Name of the fiber as assigned in the 525N unit when test was performed.
IL AVERAGE WAVE A -	Wave A average Insertion Loss tested in both directions (from local to remote and remote to local test units).
IL AVERAGE WAVE B -	Wave B average Insertion Loss tested in both directions (from local to remote and remote to local test units).
IL PASS -	A check mark Indicates passing test result based upon the Threshold settings defined in the 525N test unit.
IL WAVE A LOCAL TO REMOTE -	Insertion Loss test result for Wave A, from the local to the remote test unit.
IL WAVE A REMOTE TO LOCAL -	Insertion Loss test result for Wave A, from the remote to the local test unit.
L WAVE B LOCAL TO REMOTE -	Insertion Loss test result for Wave B, from the local to the remote test unit.
IL WAVE B REMOTE TO LOCAL -	Insertion Loss test result for Wave B, from the remote to the local test unit.
LIMIT IL WAVE A -	Threshold level set in the 525N Test Unit.
LIMIT IL WAVE B -	Threshold level set in the 525N Test Unit.
LIMIT RL WAVE A -	Threshold level set in the 525N Test Unit.
LIMIT RL WAVE B -	Threshold level set in the 525N Test Unit.

DATA GRID *Continued.* . .

REF IL WAVE A LOCAL TO REMOTE -	Absolute Power for Wave A, local to remote, that needs to be captured in order to perform a reference test in dB.
REF IL WAVE A REMOTE TO LOCAL -	Absolute Power for Wave A, remote to local, that needs to be captured in order to perform a reference test in dB.
REF IL WAVE B LOCAL TO REMOTE -	Absolute Power for Wave B, local to remote, that needs to be captured in order to perform a reference test in dB.
REF IL WAVE B REMOTE TO LOCAL -	Absolute Power for Wave B, remote to local, that needs to be captured in order to perform a reference test in dB.
RL PASS -	A check mark Indicates passing test result based upon the Threshold settings defined in the 525N test unit.
RL WAVE A LOCAL TO REMOTE -	Return Loss test result for Wave A, from the local to the remote test unit.
RL WAVE A REMOTE TO LOCAL -	Return Loss test result for Wave A, from the remote to the local test unit.
RL WAVE B LOCAL TO REMOTE -	Return Loss test result for Wave B, from the local to the remote test unit.
RL WAVE B REMOTE TO LOCAL -	Return Loss test result for Wave B, from the remote to the local test unit.

DATA GRID *Continued.* . .

RL WORST CASE WAVE A -	Poorest Return Loss test result for Wave A measured from either direction (from local to remote and remote to local test units).
RL WORST CASE WAVE B -	Poorest Return Loss test result for Wave B measured from either direction (from local to remote and remote to local test units).
TIMESTAMP -	Time and Date the test was performed by the 525N Unit.
WAVE A -	Wavelength A of 525N-30 = 850nm Wavelength A of 525N-60 = 1310nm
WAVE B -	Wavelength B of 525N-30 = 1300nm Wavelength B of 525N-60 = 1550nm
CABLE ID -	User input from the 525N unit for record purposes.
FIELD 1 DATA -	User definable data.
FIELD 1 NAME -	User definable data.
FIELD 2 DATA -	User definable data.
FIELD 2 NAME -	User definable data.
JOB ID -	Name, assigned by user into Report Writer/Job Manager.
LENGTH -	Cable length, input by user into Report Writer/Job Manager.
LOCATION A DEVICE ID -	Location A 525N Unit Serial Number.
LOCATION B DEVICE ID -	Location B 525N Unit Serial Number.
MANUFACTURER -	Cable manufacturer, input by user into Report Writer/Job Manager.
NOTES -	User definable data, input into Report Writer/Job Manager.
CUSTOMER -	User definable data, input into Report Writer/Job Manager.
CABLE TYPE -	Cable Information, input by user into Report Writer/Job Manager.

TEST DETAILS

When a selected record is chosen from the Data Grid, details specific to that record will populate these fields:

MEASUREMENT INFORMATION - Test result data that has been uploaded from the 525N Test Set.

PROJECT INFORMATION,
MATERIAL INFORMATION,
& CABLE / FIBER COMMENTS - Input from the Job Manager Screen in Report Writer.

Measurement Information

	Wavelength (nm)	Insertion Loss A to B (dB)	Insertion Loss B to A (dB)	Insertion Loss Average (dB)	Return Loss(dB) Worst Case
Wavelength A					
WaveLength B					

Project Information

Job :	1234	Location A :	Vault 102	Location B :	Terminal 14
Customer :	T. Research Corp.	Operator A :	J. Smith	Operator B :	S. Jones
Date :	11/10/2003 12:00:00 AM	Sample Field 1	Sample Data 1	Sample Field 2	Sample Data 2

Material Information

Manufacturer :	Fiber Fun Inc.	Length (m) :	1248
Cable Type :	SMA 906		

Cable Comments

Example - Data Upload Single Mode (Unit 1)

FIBER COMMENTS

Per the example below, when an individual Fiber has been selected from the Data Grid, the FIBER COMMENTS field replaces the CABLE COMMENTS field. Fiber Comments are input directly from the display field by placing the cursor in the field, typing the note, and clicking on the box - Update Fiber Comment.

Fiber Comments

Fiber Comment: Example for Fiber 2	Update Fiber Comment
------------------------------------	----------------------

JOB MANAGER

Use Job Manager to create, edit and delete individual jobs. To access the Job Manager, click on the Job Manager icon in the Data manager list bar.

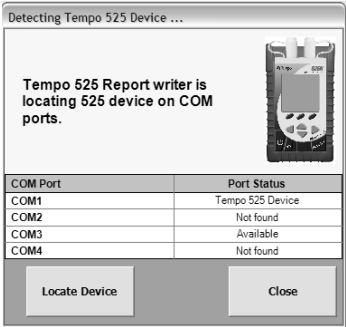
Select the Job : <div>1234</div> <div>00019</div> <div>Job Manager Example</div>	Job Details : <div>Job ID* : <input type="text" value="Job Manager Example"/></div> <div>Customer : <input type="text" value="Sample Customer"/></div> <div>Date : <input type="text" value="Wednesday, November 12, 2003"/></div> <div>Location A : <input type="text" value="Building A - Cable Vault"/> Operator A : <input type="text" value="J. Smith"/></div> <div>Location B : <input type="text" value="Building B - Equipment Room"/> Operator B : <input type="text" value="S. Jones"/></div>
	Material Information : <div>Cable Manufacturer: <input type="text" value="Fast Fiber Inc."/></div> <div>Connector Type: <input type="text" value="ST"/></div> <div>Cable Length (m): <input type="text" value="625"/></div>
	User Field : <div>Field Name1 : <input type="text" value="Limitations"/> User Data1 : <input type="text" value="None"/></div> <div>Field Name2 : <input type="text" value="Duration"/> User Data2 : <input type="text" value="1 Hour"/></div> <div>Notes : <div>Testing successfully completed. All Fibers connectorized and terminated on patch panels</div></div>
	<div>Create New Job</div> <div>Submit New Job</div> <div>Update Job</div>

CREATING A NEW JOB

1. Click the Job Manager icon in the List Bar.
2. Click the Create New Job button.
3. Populate the Job Detail, Material Information and User Field data as needed. Note: Job ID & Cable Length are required entry fields.
4. A note pertaining to the job may be added in the Notes field. The note will appear in the Cable Comments field.
5. Click Submit New Job button.
6. The new job will appear in the box at the left.

UPLOADING AND SAVING 525N DATA TO REPORT WRITER

1. Connect the standard serial cable to the serial port (RS232) on the right side of the 525N Unit, and to the serial port on your computer.
2. Turn on the 525N Unit.
3. Click the Upload Data icon in the List Bar. A window will open to locate the port the unit is connected to.
4. Click the Locate Device button in the window.
5. When the device is located, click the Close button.
6. The Status Bar in the lower left corner of the screen will indicate the 525N Unit is properly connected.
7. Click the Upload Data button at the bottom of the screen. The middle column of the status bar at the bottom of the screen will display the status of the data upload.



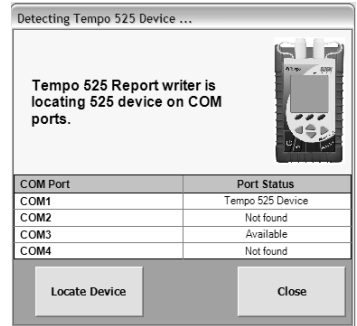
Note: Every time you click the Upload Data button, the software synchronizes the internal clock on your 525 to your system clock.

8. When data has uploaded to the computer, it will be displayed on screen. By default, all uploaded data is selected to be saved to the database. To unselect specific records so they will not be saved, uncheck the desired box(es) in the Save to DB column.
9. Press the Load Selected Records into Database button to store the data that remains selected.
10. The user will then be prompted to delete all data that is currently on the connected 525 device. This is recommended since it allows more test records to be stored in the future and allows for a faster upload time since duplicate records (which are not imported into the database) are not uploaded. NOTE: ALL TEST DATA WILL BE PERMANENTLY DELETED FROM THE 525.
11. Click the Cable Manager icon to return to the main screen.

DELETING DATA FROM THE 525 UNIT

To manually delete data from your 525 Unit:

1. Connect the standard serial cable to the serial port (RS232) on the right side of the 525N Unit, and to the serial port on your computer.
2. Turn on the 525N Unit.
3. Click the Verify 525 Device icon in the Database Utilities List Bar. A window will open to locate the port the unit is connected to.
4. Click the Locate Device button in the window.
5. When the device is located, click the Close button.
6. The Status Bar in the lower left corner of the screen will indicate the 525N Unit is properly connected.
7. Click on the Delete 525 Data icon in the Data Manager List Bar.



Tempo 525 device connected at COM1

Set Current Port : Done

Note: This will not clear thresholds or references stored on your 525, however - ALL TEST DATA WILL BE PERMANENTLY DELETED FROM THE 525.

SETTING THE 525 UNIT CLOCK FROM REPORT WRITER

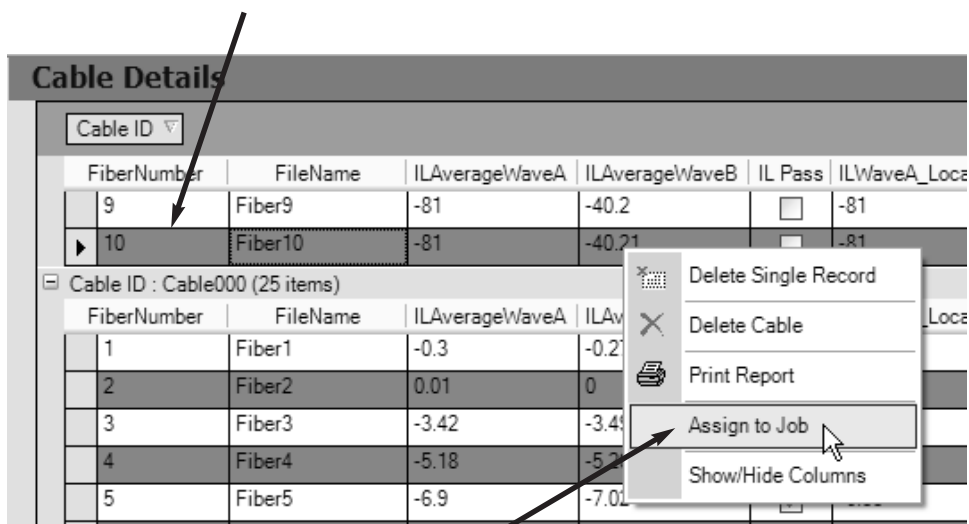
To manually set the 525 Unit clock from Report Writer, establish a connection to the Unit by following steps 1 through 6 above, and then:

1. Click on the Set 525 Clock Icon in the Database Utilities List bar.

ASSIGNING DATABASE DATA IN REPORT WRITER

To assign a Cable to a Job, first create a job in Job Manager, then, access the Cable Manager screen by clicking on the Cable Manager Icon in the Data Manager List bar:

1. Click on the cable you wish to add to a previously created job. The arrow in the left hand column indicates the cable selected.



The screenshot shows the 'Cable Details' window. At the top, there is a 'Cable ID' dropdown menu. Below it is a table with columns: FiberNumber, FileName, ILAverageWaveA, ILAverageWaveB, IL Pass, and ILWaveA_Loca. The table contains two rows: Fiber 9 and Fiber 10. Fiber 10 is selected, indicated by a black arrow pointing to it. Below the table, there is a section titled 'Cable ID : Cable000 (25 items)' which contains another table with columns: FiberNumber, FileName, ILAverageWaveA, and ILAverageWaveB. This table contains five rows: Fiber 1, Fiber 2, Fiber 3, Fiber 4, and Fiber 5. A context menu is open over the 'Assign to Job' button, showing options: Delete Single Record, Delete Cable, Print Report, Assign to Job (highlighted), and Show/Hide Columns. A black arrow points from the 'Assign to Job' button in the context menu to the 'Assign to Job' button in the screenshot.

FiberNumber	FileName	ILAverageWaveA	ILAverageWaveB	IL Pass	ILWaveA_Loca
9	Fiber9	-81	-40.2	<input type="checkbox"/>	-81
10	Fiber10	-81	-40.21	<input type="checkbox"/>	-81

FiberNumber	FileName	ILAverageWaveA	ILAverageWaveB
1	Fiber1	-0.3	-0.2
2	Fiber2	0.01	0
3	Fiber3	-3.42	-3.4
4	Fiber4	-5.18	-5.2
5	Fiber5	-6.9	-7.0

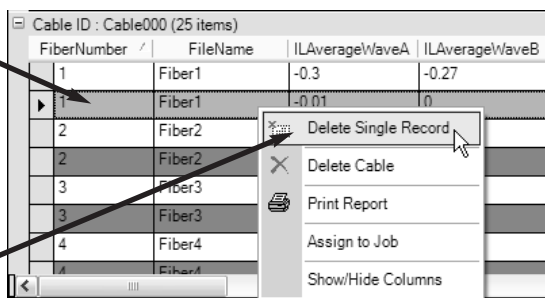
2. Right click and choose Assign to Job. A window will open with a list of previously created jobs.
3. Click on the job ID you want the item assigned to.
4. Click OK to close window.



DELETING A SINGLE RECORD FROM THE REPORT WRITER DATABASE

From the Data Grid, a single record can be deleted from the database.

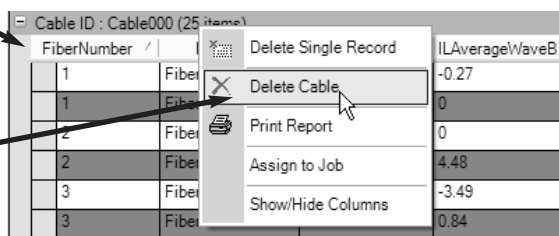
1. Click on the item you wish to delete. (The arrow in the left hand column indicates what record you've selected.)
2. Right click and choose Delete Single Record.



WARNING: THIS ACTION IS IRREVERSIBLE. ALL DATA WILL BE PERMANENTLY DELETED FROM THE PROGRAM.

DELETING A CABLE FROM THE REPORT WRITER DATABASE

1. Click on the cable you wish to delete. (The arrow in the left hand column indicates the record you've selected.)
2. Right click and choose Delete Cable.

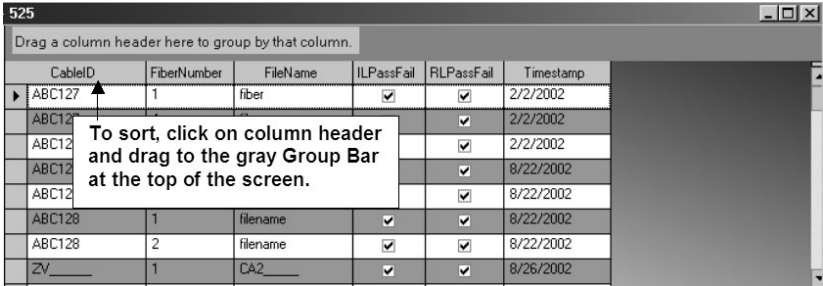


WARNING: THIS ACTION IS IRREVERSIBLE. ALL DATA WILL BE PERMANENTLY DELETED FROM THE PROGRAM.

Sorting Saved Data

Report Writer's drag and drop feature allows you to view and sort data by any of the column headings.

- 1. For example, to review data sorted by Cable, drag the Cable ID field to the gray Group Bar at the top of the screen.



- 2. The Cable ID field will appear in the gray Group Bar, and the sorted data will appear below.



- By clicking on the addition sign next to any cable, you may view the data specific to that cable.

FiberNumber	FileName	ILPassFail	RLPassFail	Timestamp
5	fibernew	✓	✓	2/2/2002
4	fibernew	✓	✓	2/2/2002
1	fiber	✓	✓	2/2/2002

+

+

+

- You may also sort data in subsets by dragging an additional field to the gray Group Bar. For example, to see Cables tested on a certain date, you may sort them by the Timestamp.
- After you drag the Timestamp field to the gray Group Bar, the Cables will be assorted first by Cable ID number, then by Timestamp.

CableID	Timestamp
ABC127 (1 item)	2/2/2002 12:00:00 AM (3 items)
ABC128 (1 item)	8/22/2002 12:00:00 AM (10 items)
ABC129 (1 item)	8/22/2002 12:00:00 AM (10 items)
ZV_____ (1 item)	8/26/2002 12:00:00 AM (9 items)

+

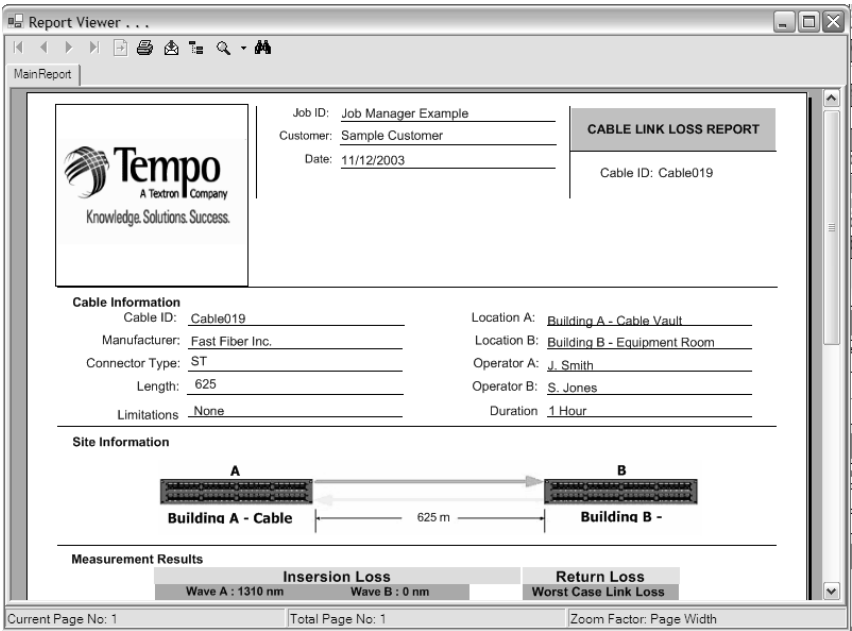
+

+

NOTE: To ungroup a field, simply drag it from the gray Group Bar to the Grid below.


PRINTING A REPORT

- 1. From the Data Manager screen, highlight the Cable or Fiber you wish to include in the printed report.
- 2. Click the Print Detail Report icon in the List Bar. The report will appear in the Report Viewer window.
- 4. Click the Print Report icon in the Toolbar at the top of the open Report Viewer window, to send the report to an external printer.



EXPORTING A REPORT

To export a Report Writer document to a different program:

- 1. From the Data Manager screen, highlight the Cable or Fiber you wish to export as data.
- 2. Click the Print Detail Report icon in the Data Manager List Bar. The report will appear in the Print Viewer window.
- 3. Click the Export Report icon -  in the Toolbar at the top of the open Report Viewer window.
- 4. From the Export Report window, select the type of file to save the report as - .pdf, .xls, .doc, .rtf, and provide a file name.
- 5. Click Save to complete the export.

CUSTOMIZING A PRINTED REPORT WITH A UNIQUE GRAPHIC

Users can customize printed and exported reports with their company logo, or other graphic of their choosing, to be displayed in the upper left corner of the report.

To utilize a unique graphic in Report Writer:

1. From the Database Utilities List bar, click the Select Report LOGO icon -



Select Report LOGO

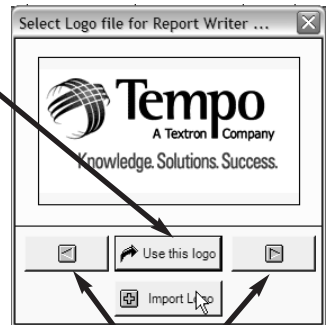
2. From the 'Select Logo File for Report Writer' window, click the Import Logo button.

3. From the 'Please Select Report Logo File' window, identify the file type and provide a file name. You can save as many images as you like.

4. Click Open, to close the window.

5. From the 'Select Logo File for Report Writer' window, click the arrow buttons to scroll through the images you have imported.

6. Click on the Use this Logo button to insert the graphic on your printed or exported report.





Knowledge. Solutions. Success.



Knowledge. Solutions. Success.

1390 Aspen Way · Vista, CA 92083
760-598-8900 · 800-642-2155 · Fax 760-598-5634
M – F · 7:00 a.m. – 4:30 p.m. · Pacific Time

Unit 3, Maesglas Industrial Estate
Newport, NP20 2NN, UK
+44 (0) 1633 223552 • Fax +44 (0) 1633 223948

www.tempo.textron.com